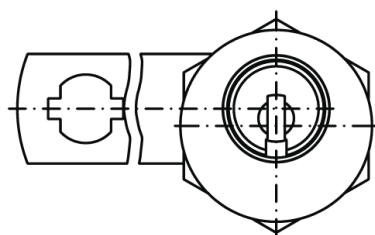
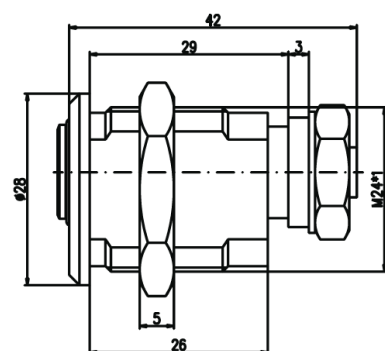
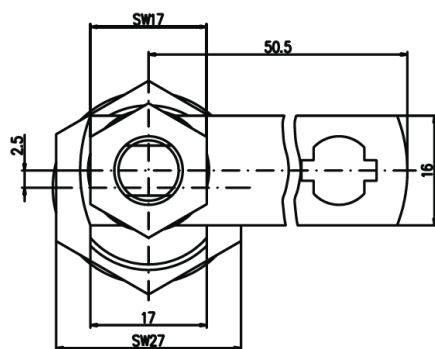
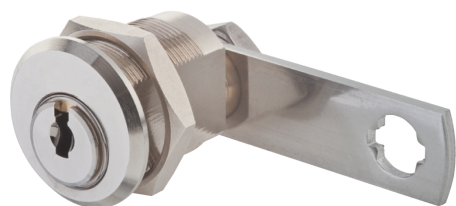
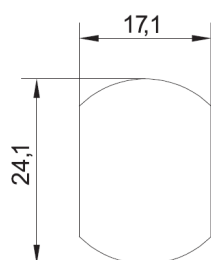


Camlock Cylinder

BMZ 1091



Installation Hole



Application:

Camlock cylinder with hex nut fastening, suitable for installation in wood and metal. The cam can be used in left and right hinged doors as well as in drawers.

Key rotation 90° to the right, key can only be removed when locked.

Specification:

- Housing supplied in solid natural brass with nickel plating
- Zinc coated steel cam
- Nickel-plated brass hex fastening nut
- Reversible key made from nickel silver
- Supplied without rosette*

Included with the cylinder:

- Cam 210.201.701
- Fastening Nut - M24 x1, hex size 27mm
- Installation and maintenance instructions

Available Patented Systems:

- quattro Plus (K85)
- expert Plus (K83)

Available Legacy Systems:

- quattro Plus (K58)
- expert (K56)

Standard Surface Finishes:

- Nickel Plated (NI)
- Raw Brass (RB)

Special Surface Finishes:

- Satin Chrome (CR)
- Polished Chrome (CRP)
- Polished Brass (PB)
- Medium Bronze (BM)
- Dark Bronze (BD)
- Black, Matt (BKM)

Key Optional extras:

- dormakaba key bow clips available in 11 colours

Extras:

- Large selection of alternative cams available. Please contact your dormakaba sales representative for more information
- *AK465 Rosettes Available in 2 & 5mm

dormakaba UK & Ireland
Lower Moor Way
Tiverton
Devon
EX16 6SS

T: +44 (0)870 000 5625
E: info.gb@dormakaba.com

www.dormakaba.co.uk